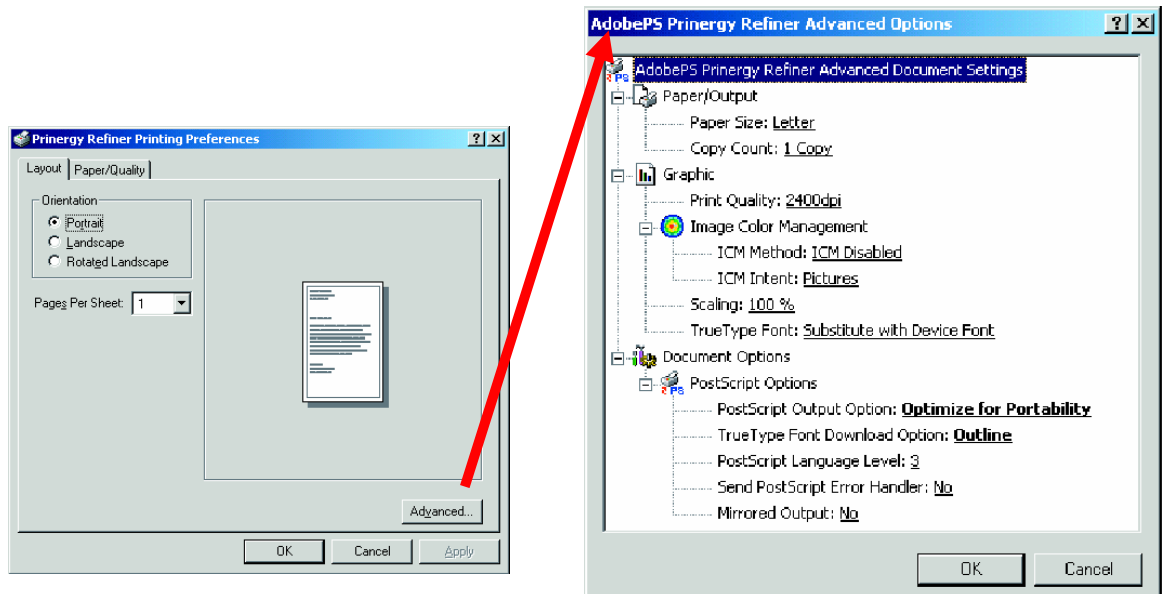


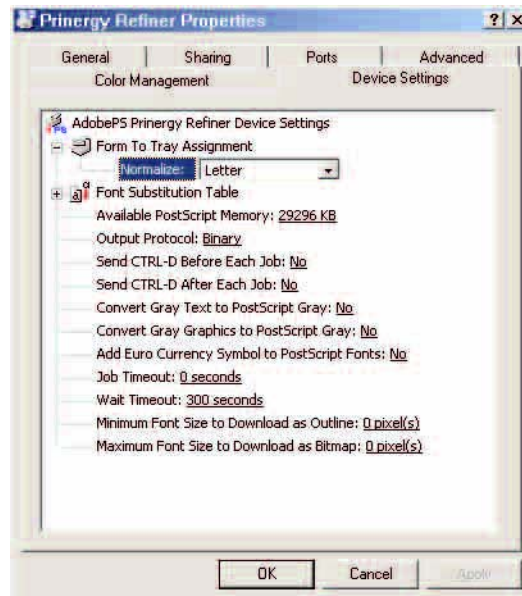
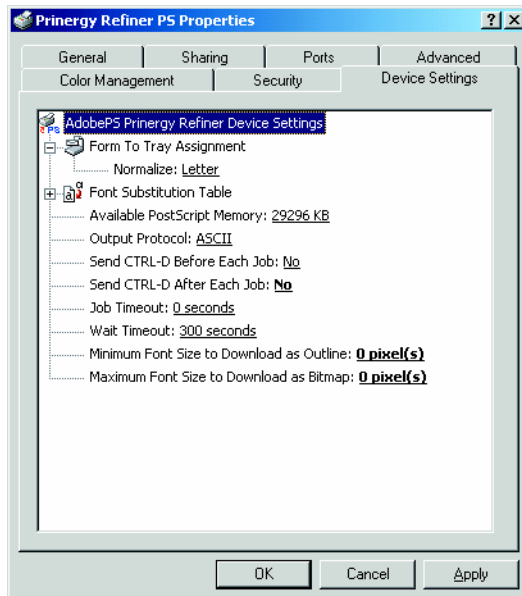
## Windows 2000/XP

1. Download and install the PPD, *Prinergy Refiner.ppd* into C:\WINNT\System.
2. Download and launch the driver installer. Click *NEXT*.  
Note: If you already had a previous version of Adobe PS installed, you may be asked to upgrade or install a new driver. If so, choose “...install a new PostScript printer” and click *NEXT*.
3. If you accept the license agreement, Click *ACCEPT*.
4. Choose “It is directly connected... (Local Printer)”. Click *NEXT*.
5. Select *FILE: Local Port*. Click *NEXT*.
6. Click on *BROWSE*, navigate to C:\WINNT\System and highlight *Prinergy Refiner* from the list. Click *OK* then Click *NEXT*.
7. Click on *Not shared*. Click *NEXT*.
8. Enter the printer name *Prinergy Refiner*.  
Default: *No*  
Test Print: *No*  
Click *NEXT*.
9. Click *Install*.
10. The printer configuration window will come up. Click on *No*.  
Click *NEXT*.
11. Deselect *View ReadMe file* and Click *Finish*.
12. From the *Start* menu, choose *Settings > Printers*.
13. Right-click on *Prinergy Refiner* printer and choose *Properties*.
14. From the *General* section, click on *Printer Preferences*. Then click on *Advanced* and match the screen capture on the right.

**Before you start:**  
Download the Prinergy Refiner.ppd and the Adobe Universal Postscript Driver Installer from nctools.com website.



15. Click on the Device Settings tab and match to the following screen captures.



16. No modifications need to be made in *General*, *Ports*, *Scheduling*, *Sharing*, *Security*, *Color Management*, or *Advanced*.

17. When finished, click **OK**.