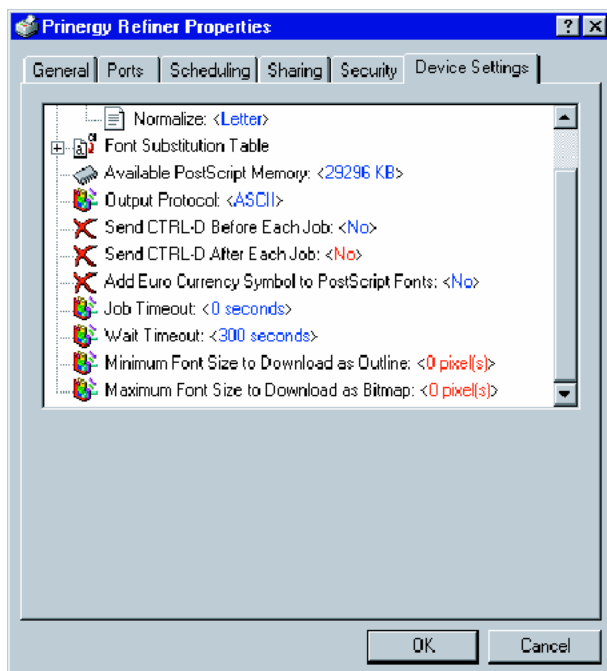
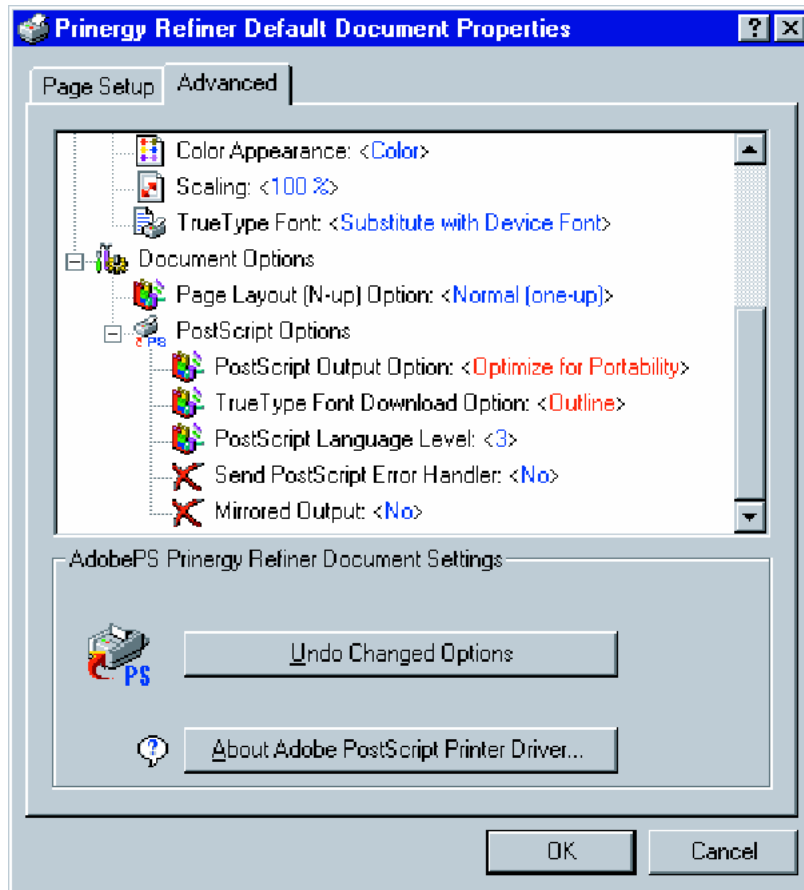


## Windows NT 4.0

1. Download and install the PPD, *Prinergy Refiner.ppd* into C:\WINNT\System.
2. Download and launch the driver installer. Click *NEXT*.  
Note: If you already had a previous version of Adobe PS installed, you may be asked to upgrade or install a new driver. If so, choose "...install a new PostScript printer" and click *NEXT*.
3. If you accept the license agreement, Click *ACCEPT*.
4. Choose "It is directly connected... (*Local Printer*)". Click *NEXT*.
5. Select *FILE: Local Port*. Click *NEXT*.
6. Click on *BROWSE*, navigate to C:\WINNT\System and highlight *Prinergy Refiner* from the list. Click *OK* then Click *NEXT*.
7. Click on *Not shared*. Click *NEXT*.
8. Enter the printer name *Prinergy Refiner*.  
Default: *No*  
Test Print: *No*  
Click *NEXT*.
9. Click *Install*.
10. The printer configuration window will come up. Click on *No*.  
Click *NEXT*.
11. Deselect *View ReadMe file* and Click *Finish*.
12. From the *Start* menu, choose *Settings > Printers*.
13. Right-click on *Prinergy Refiner* printer and choose *Properties*.
14. Click on the *Device Settings* tab and match to the following screen capture.  
Click *OK*.



15. Right-click on *Prinerly Refiner* printer from the Printer list and choose *Document Defaults*.
16. Click on the Advanced tab, scroll down to the bottom of the window and edit the *PostScript Option* properties to match the following screen capture.



17. Click *OK*.